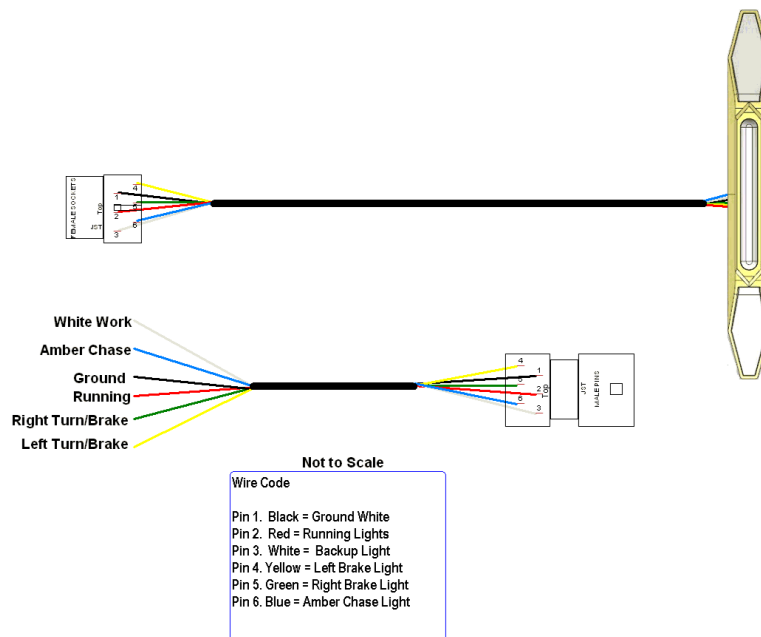




# XTC Chase Light

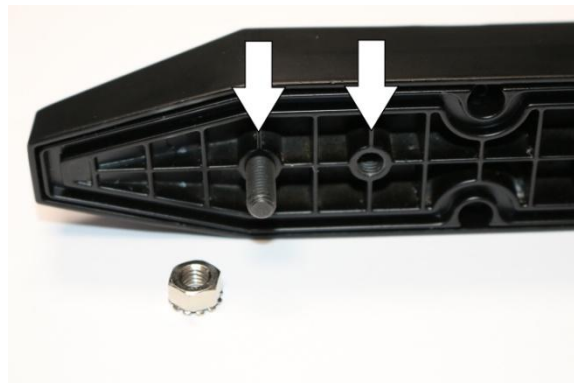
Thank you for purchasing XTC Power Products Chase Light. It Features Running Lights, Turn Lights, Amber Chase light and white work light.

**Please read the instructions fully and familiarize yourself with the components before starting the installation. The diagram below shows the overall system layout.**

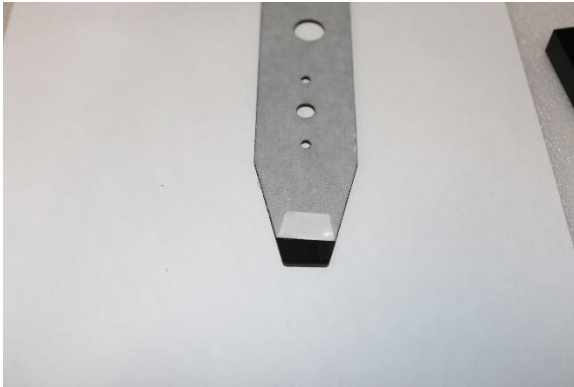


Decide on the mounting – The light can be mounted on a roll bar or on a flat surface with double sticky tape or studs or both. The included gasket is used when flat mounting the light or as a template when installing on a roll cage.

1. Flat Mount – Decide where to mount the light making sure there is clearance for the mounting studs if using the studs, remove white backing and apply to vehicle. If using the studs put two studs into the light, drill out corresponding holes, there are 2 sets, inside and outside, test fit in holes, remove and pull the red backing off the double sticky tape and install the light.



2. Roll bar mount – Using the gasket as a template, bend back about a half inch of the white backing exposing the sticky surface, then put it on the bar, using a level make sure it is straight and centered.



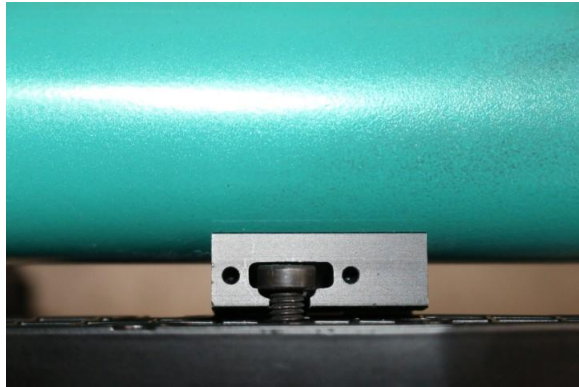
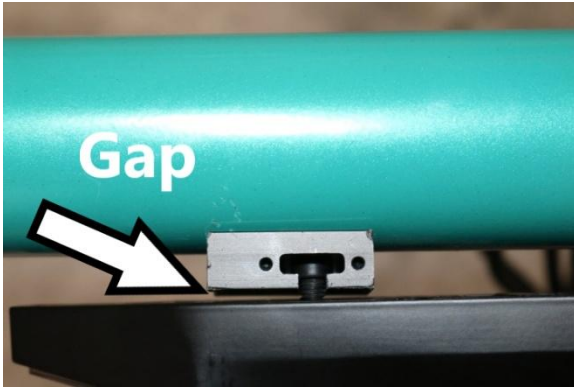
3. There are 2 small holes at each end and either set can be used, using a punch to mark 2 holes, one on each end, we include self-tapping screw but recommend drilling a 1/8" hole to make it easier to install. Remove the template and use the supplied self-tapping screws to install the brackets.



4. Install the mounting screw – If the outer holes were drilled put the two screws in the inside holes as shown below, by hand only, no tools.



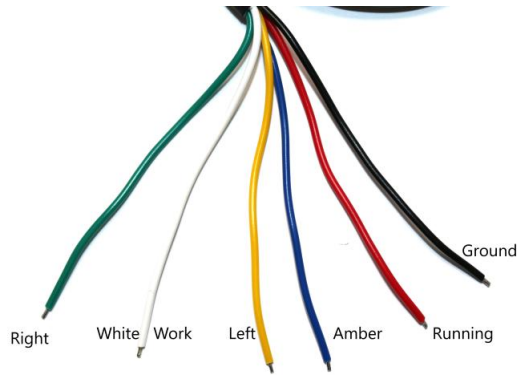
5. Mount the light – Line the head of the screw up with the slot, if they do not line up loosen the self-tapping screws and adjust then re-tighten them. Next, adjust the gap between the light and the bracket, using ¼ turns, adjust screws until they slide on, snug but not tight. NOTE: DO NOT FORCE



6. Put on the locks – slide locks into the bracket and secure with the included screws.



7. Following the wire guide, wire up the light.



We can be reached by email at [support@xtcpowerproducts.com](mailto:support@xtcpowerproducts.com)

XTC Power Products  
A Division of XTC Motorsports LLC  
380 E Comstock Dr.  
Chandler AZ 85225  
480-558-8588

[www.xtcpowerproducts.com](http://www.xtcpowerproducts.com)

\*Disclaimer: This kit is intended for off road use only and XTC Motorsports claims no responsibility for its use. It is up to the purchaser to make sure it complies with all Federal, State and Local laws. R1  
Copyright © 2025 XTC MOTORSPORTS LLC, all rights reserved.