



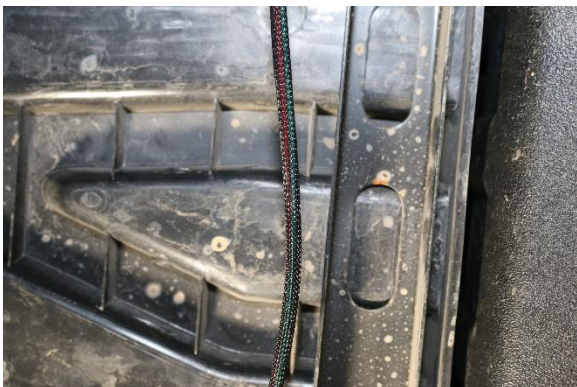
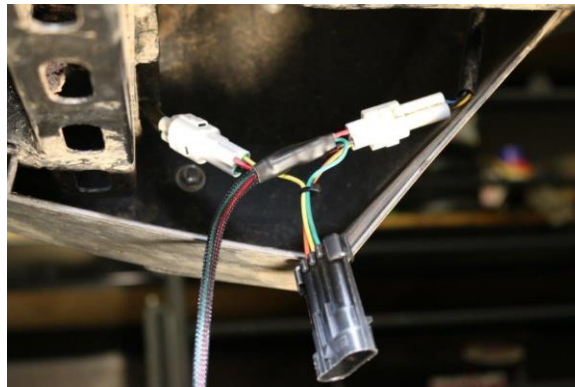
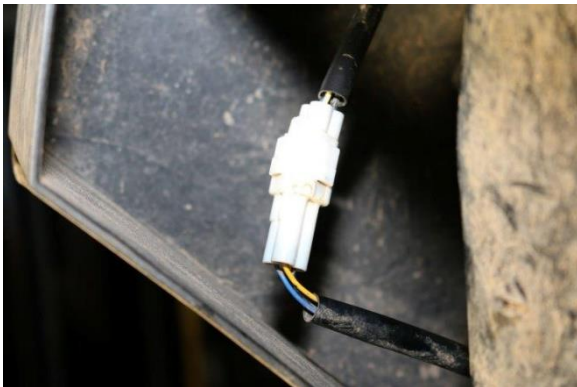
TSS-YAM-S3 & S4 TURN SIGNAL SYSTEM

Thank you for purchasing XTC Power Products Turn Signal System. This system is part of our Plug & Play™ product line. This fits the New Style Yamaha Wolverine 2 and 4 seats. These instructions cover both the 2018 and 2019 models. The only difference is the connectors that interface Yamaha switched the direction of the Male and Female. Make sure you have received the proper kit for the year car before you start the install.

For more details on installation go to www.xtcinstall.com

Please read the instructions fully and familiarize yourself with the components before starting the install.

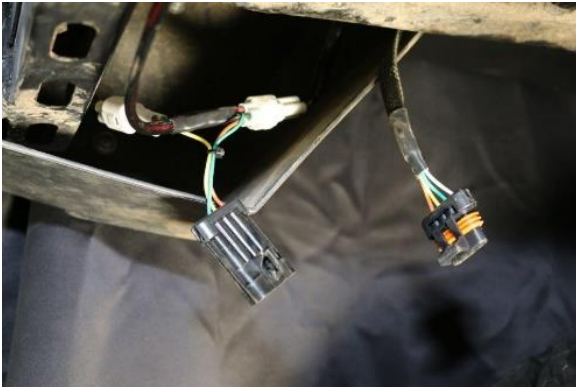
- 1. Remove the Hood and center plastic center console/engine cover**
- 2. Open Dash –** Remove the fasteners that hold the top of the fire wall to the dash for access into the dash
- 3. Install Rear Light Harness -** On the driver's side rear tail light, unplug the 3-wire connector by pushing in on tab. Plug the TSS harness with Yellow wire in-line. Run the connector with the Green wire over to the Right tail light, secure with included cable ties, unplug the light, remove the connector from TSS harness that has the red and black wire, then plug our harness into the right rear light, plug the removed connector into the open harness, these wires are used to light an optional license plate light.



4. **Mount the Control Unit** – Mount the TSS control box under the hood on the fire wall with the provided screws.



5. **Run the Rear Harness** - Attach the long extension harness to the previously installed rear light harness. Run the rest of the harness with the male four pin connector through the center of the car, through the fire wall at the main wire harness up to the control box and plug into the mating connector, **make sure to keep the harness away from any hot or moving parts, secure with provided cable ties.**



WARNING! Verify that there is clearance before drilling the holes for the LED's and keep the harness away from any hot or moving parts.

6. **Install the two front LED lights** - Drill 5/8" or a 3/4" holes in the front corners, 5/8" if not using the rubber grommet, remove the rubber grommets from the LED's and insert into the holes, insert the LED's into the grommets with the mark TOP on top.



7. **Plug front Harness into control box.** Run the Green wire harness to the right/passenger side and the yellow wire harness goes to the left/driver's side. Both green and yellow wires are positive and go to the black wire on the LED Light, the white wire goes to white. Secure the harness with the provided cable ties. **NOTE: Black wire is positive, and the White is ground, they will not work if reversed.**



WARNING! Verify that there is clearance behind dash for Turn, Hazard and Horn switch's

8. **Install the Turn Switch** – Cut two of the switch rectangles out or use the switch template to mark the rectangle for the switch and drill a hole in each corner, using an appropriate cutting tool cut out the rectangle. Run the switch connectors through, apply Dielectric Grease to both switches (see Below) and attach the Turn Switch and the Hazard/Horn switch, insert into opening.



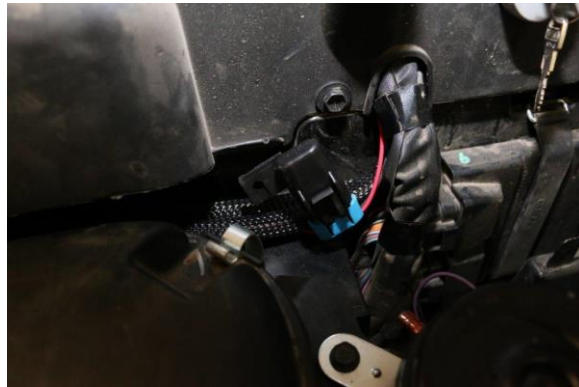
Dielectric Grease - LED flashers by design take very little current to activate. When water gets on the dash and lands on the top of the switch, it can trickle to the connector causing it to activate the flasher by using the switches LED indicator, the system will continue to operate and does not hurt the system but will continue

clicking until the switch terminals dry. Just like the OEM we recommend using Dielectric Grease on all switch terminals, this keeps the water out and will stop the clicking, it also reduces corrosion and increases reliability! Open the grease and put on the switch terminals and the connector terminals, the more the better, also put some on the Hazard switch terminals. It should also be used on any extra switches that you may have installed.

9. **Mount the Horn** – Install the horn bracket onto the horn. Remove OEM bolt near the OEM Relays and mount the horn and reinstall bolt. Attach the Violet and Black wires from the front harness to the horn and secure.



10. **Run Power Wire** – Run the power wire with the fuse over to main wire harness, under the dash there is accessory connectors for optional products, remove one of the white caps that does not have any wires coming out and plug the connector in to the factory wire harness. Reinstall Firewall. Leave the fuse on outside of the firewall when reinstalled.



11. Verify operation of all lights and secure the harnesses with the provided cable ties.

Optional: The Tan wire next to the Turn Switch is for an optional Dash Indicator. When the TSS is activated it will flash 12 VDC that can be attached to an Optional Dash Mounted LED Light. More Information can be found at www.xtcinstall.com

For more details on installation go to www.xtcinstall.com

We can also be reached by email at support@xtcpowerproducts.com

XTC Power Products
A Division of XTC Motorsports LLC
925 N McQueen RD. #101
Gilbert AZ 85233
480-558-8588

www.xtcpowerproducts.com

*Disclaimer: This kit is intended for off road use only and XTC Motorsports claims no responsibility for its use. It is up to the purchaser to make sure it complies with all Federal, State and Local laws.

R2